

## STAR~PLUS EXECUTIVE DASHBOARD

The Star~Plus Executive Dashboard Module is a business management tool used to visually observe the status of a business via key business indicators. Dashboards use visual, at-a-glance displays of data pulled from various Star~Plus programs and reports to provide summaries of business conditions and alert the user to potential problems.

### Benefits

- Track progress against set business targets
- Drill down for further analysis
- Monitor performance on a daily, weekly or monthly basis
- Identify and correct trends before they become an issue
- Monitor data from a variety of Star~Plus reports on one screen
- View up to the minute data
- Gain greater business insight to make more informed decisions and gain better results

### Key Performance Indicators

#### Sales for the Last x Days

Select the Sales & Cost of Sales chart to display sales and cost of sales for the range of days chosen.

Select the Compare Sales This and Previous Year chart to compare sales from this year to the previous year for the range of days chosen.

#### Today's Sales & Margin

Displays current day's sales and margins. Visual indicators show target progress.

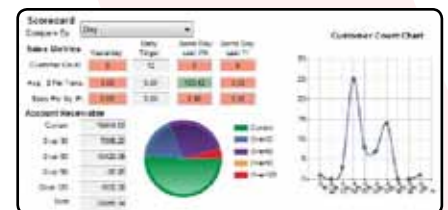
#### Scorecard

Displays data related to customer sales and customer relations, including sales metrics, accounts receivable and customer count information. Visual indicators show daily target progress, at-a-glance.

The Sales Metrics section displays customer sales and through put for the previous day, same day last week and same day last year. Includes customer counts, average sale per transaction and sales per square foot.

The Accounts Receivable section displays the total accounts receivable outstanding by blocks of thirty days or by date range.

The Customer Count chart displays the customer count for the last ten days.



## STAR~PLUS EXECUTIVE DASHBOARD

### Key Performance Indicators (continued)

#### Alerts

Lists potential problems in the store that may affect the sales and customer data displayed in the Dashboard.

#### Month to Date Sales

Displays the current month's sales to date for the three highest selling departments. Drill down to view other departments, categories and finelines.

#### Year to Date Sales & Profit

Displays the current calendar year's sales and profit to date.

#### Sales Analysis Executive Report

Displays monthly sales for the past thirteen months. Drill down to display weekly and daily sales.

#### Sales Last Week

Displays previous week's sales per square foot and store operating margin.

